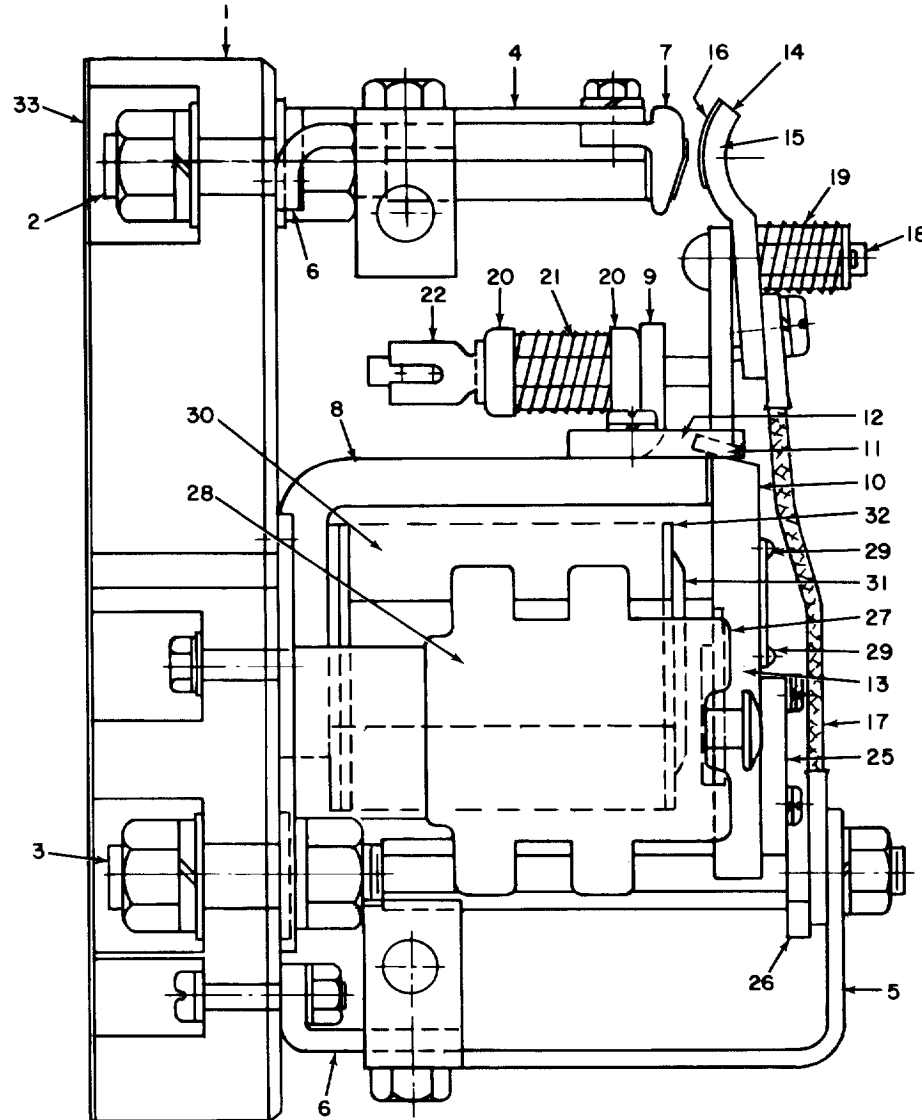


RENEWAL PARTS

IC2800-Y109 CONTACTORS

Forms A, B, C, D, and E

NOTE:—When ordering parts for a form of the contactor not covered by this bulletin, give reference number, description of part, complete nameplate reading, and above bulletin (GEF) number. Do not use catalog number when form for which the parts are needed is not covered by the bulletin.



IC2800-Y109 Contactor parts

When ordering renewal parts, give quantity, catalog number, description of each item required, and complete nameplate reading.

GENERAL  ELECTRIC

IC2800-Y109 CONTACTORS

PARTS RECOMMENDED FOR NORMAL STOCK

Ref. No.	IC2800-Y109- (No. required per contactor)					Catalog Number	Description
	A	B	C	D	E		
30	1	1	1	1	1	See Table	Operating coil
*	1	1	1	1	1	†	Set of interlock contacts, springs, and screws
3	1	1	1	1	1	287A160G2	Stationary contact tip assembly
14	1	1	1	1	1	2890181G1	Movable contact tip assembly
17	1	1	1	1	1	4953007G1	Shunt
19	1	1	1	1	1	51425	Spring, for contact tip
21	1	1	1	1	1	2414197	Spring, between cup washers

* Not shown

† See Complete List of Parts Table (page 3) for appropriate catalog number

OPERATING COILS, HOLDING RESISTORS, AND COPPER JACKETS (For Forms A, B, and D only)

NOTE: The number following the form letter in the IC designation identifies the operating coil, holding resistor, and the copper jacket. Each must be ordered separately from the table below.

EXAMPLE: IC2800-Y109-A-5- contactor requires operating coil number 5, Cat. No. F22D42G16, holding resistor, Cat. No. IC9006A50E8000DA/TH, and copper jacket, Cat. No. 4953090G2.

Coil Group No.	Coil Catalog Number	No. Req.	Holding Resistor Catalog Number	No. Req.	Copper Jacket Catalog Number	No. Req.
2	F22D42G17	1	IC9006A50E400DA/TH	1	4953090G2	1
3	F22D42G14	1	IC9006A50E1300DA/TH	1	4953090G2	1
4	F22D42G15	1	IC9006A50E5000DA/TH	1	4953090G2	1
5	F22D42G16	1	IC9006A50E8000DA/TH	1	4953090G2	1
7	F22D42G18	1	IC9006A50E1300DA/TH	1	4953090G2	1
8	F22D42G19	1	IC9006A50E1300DA/TH	1	4953090G2	1
9	F22D42G4	1	IC9006A50E2500DA/TH	1	4953090G2	1

OPERATING COILS (For forms C and E only)

NOTE: The number following the form letter in the IC designation identifies the operating coil.

EXAMPLE: IC2800-Y109-A-2- contactor requires operating coil number 2, Cat. No.

Coil Group No.	Catalog Number	No. Req.
2	F22D11G213	1
3	F22D11G268	1

IC2800-Y109 CONTACTORS

GEF-4603

COMPLETE LIST OF PARTS†

Ref. No.	IC2800-Y109- (No. required per contactor)					Catalog Number	Description
	A	B	C	D	E		
1	1	1	1	-	1	118B3139P1	Base
1	-	-	-	1	-	118B3139P3	Base
2	1	1	1	1	1	118B3138P1	Connection stud, upper bus
3	1	1	1	1	1	118B3138P2	Connection stud, lower bus
4	1	1	1	1	1	118B3140P1	Bus bar, upper
5	1	1	1	1	1	118B3140P2	Bus bar, lower
6	2	2	2	2	2	162A2829P1	Bus support, upper and lower
7	1	1	1	1	1	287A160G2	Stationary contact tip assembly
8	1	1	-	1	-	2810489G3	Core and frame assembly
8	-	-	1	-	1	2810489G5	Core and frame assembly
*	1	1	-	1	-	8058623	Core
*	-	-	1	-	1	2429373P1	Core
*	1	1	1	1	1	1459932	Frame
9	1	1	1	1	1	4951555	Armature guide
10	1	1	1	1	1	5183777G3	Armature assembly, complete
11	1	1	1	1	1	5155976	Fulcrum strip
12	1	1	1	1	1	8275836G1	Shunt and contact support assembly
13	1	1	1	1	1	8627296	Armature
14	1	1	1	1	1	2890181G1	Movable contact tip assembly, complete
15	1	1	1	1	1	1445307P2	Contact tip
16	1	1	1	1	1	2492923	Silver plate for tip
17	1	1	1	1	1	4953007G1	Shunt
18	1	1	1	1	1	2496756	Pin, for movable contact tip
19	1	1	1	1	1	51425	Spring, for movable contact tip
20	2	2	2	2	2	437972P1	Cup washer
21	1	1	1	1	1	2414197	Spring, between cup washers
22	1	1	1	1	1	9196760	Locknut, for cup washers and spring
*	1	1	1	1	1	8627295	Shim, for armature assembly
*	1	1	1	1	1	8058795	Shim clamp
25	1	1	1	1	1	575A557P2	Operating armature
26	1	1	1	1	1	2496754	Armature stop
27	-	-	-	1	-	148B8550G16	Interlock assembly, complete
27	-	-	-	-	1	157B2708G96	Interlock assembly, complete
27	-	1	-	-	-	723B245G4	Interlock assembly, complete
27	1	-	1	-	-	723B245G6	Interlock assembly, complete
28	-	-	-	1	-	IC2956A200AJ	Interlock
28	-	-	-	-	1	IC2956A205A	Interlock
28	-	1	-	-	-	IC2956A200A	Interlock
28	1	-	1	-	-	IC2956A200C	Interlock
*	1	1	1	1	1	575A555P1	Interlock bracket
*	1	1	1	1	-	6960053G3	Set of interlock contacts ‡
*	-	-	-	-	1	6960053G46	Set of interlock contacts ‡
29	2	2	2	2	2	576A144P6	Screw, for interlock assembly
30	1	1	1	1	1	See Table, Page 2	Operating coil
31	1	1	1	1	1	1447716	Spring washer
32	1	1	1	1	1	5900031P56	Washer
33	1	1	1	-	1	118B3139P2	Insulation, between base and mounting frame
33	-	-	-	1	-	118B3139P4	Insulation, between base and mounting frame

* Not shown

† Hardware listed below

‡ Includes movable and stationary contacts with springs and contact holding screws

COMPLETE LIST OF HARDWARE

BOLTS AND SCREWS		LOCK WASHERS	
Cat. No.	Description	Cat. No.	Description
N530P403C6	No. 4, 3/16 in., drive, cadmium	N403P16C6	For No. 8 screw, cadmium
N75P15010	8-32, 5/8 in., pan hd. slot, brass	N405P38B6	For No. 8 screw, medium
N75P15012	8-32, 3/4 in., pan hd. slot, brass	N405P39B6	For No. 10 screw
N144P16008C6	10-32, 1/2 in., pan hd. slot, w/washer, cadmium	N405P41B6	For 1/4 in. screw
N57P16012B6	10-32, 3/4 in., pan hd. slot, pro. fin.	N405P43B6	For 3/8 in. screw
N144P21006C6	1/4 in.-20, 3/8 in., pan hd. slot, w/washer, cadmium		
N22P21010B6	1/4 in.-20, 5/8 in., hex hd., pro. fin.		
N22P21014B6	1/4 in.-20, 7/8 in., hex hd., pro. fin.		
N22P25016B6	3/8 in.-16, 1 in., hex hd., pro. fin.		

NUTS		COTTER PINS		PLAIN WASHERS	
Cat. No.	Description	Cat. No.	Description	Cat. No.	Description
N210P16B6	10-32, hex	N503P608B6	1/16 in. by 1/2 in., steel	N402P8B6	For No. 8 screw
N203P25B6	3/8 in.-16, hex	N503P712B6	5/64 in. by 3/4 in., steel	N402P9B6	For No. 10 screw
N245P25B6	3/8 in.-16, hex			N402P11B6	For 1/4 in. screw
				N402P13B6	For 3/8 in. screw

**GENERAL ELECTRIC COMPANY
INDUSTRIAL CONTROL DEPARTMENT
SALEM, VA. 24153**

GENERAL  ELECTRIC