

RENEWAL PARTS

GEF-4343

IC2800-1180 CONTACTOR

Forms AU, AW, BB, and BC

NOTE:—When ordering parts for a form of the contactor not covered by this bulletin, give reference number, description of part, complete nameplate reading, and above bulletin (GEF) number. *Do not use catalog number when form for which the parts are needed is not covered by the bulletin.*

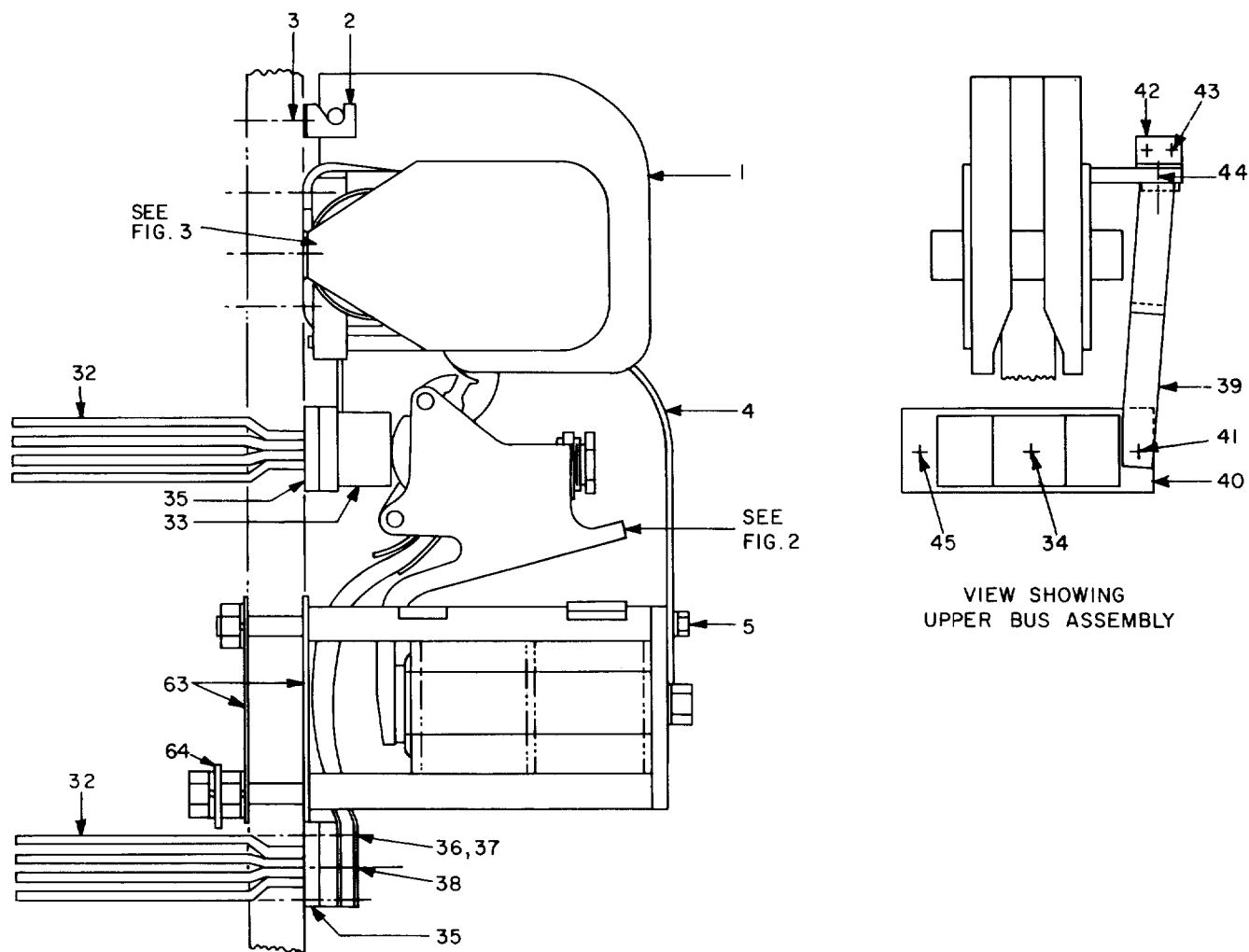


Fig. 1.

When ordering renewal parts, give quantity, catalog number, description of each item required, and complete nameplate reading.

GENERAL  ELECTRIC

IC2800-1180 CONTACTOR

PARTS RECOMMENDED FOR NORMAL STOCK

Fig. No.	Ref. No.	Number Required for IC2800-1180-				Catalog Number	Description
		AU	AW	BB	BC		
1	1	1	1	1	1	106B9292G1	Arc chute, complete
3	30	1	1	-	1	2458490	Stationary arcing contact tip
		-	-	1	-	139B8096G1	Stationary arcing contact tip
2	16	1	1	-	1	2459875	Movable arcing contact tip
2	20	1	1	1	1	4338327G2	Shunt for movable arcing contact
2	19	1	1	1	1	2413372	Compression spring for movable arcing contact tip
1	33	1	1	1	1	9034388G2	Main stationary contact
2	9	2	2	2	2	3866756G2	Main movable contact tip
2	14	2	2	2	2	4338327G1	Shunt for main movable contact
2	12	2	2	2	2	2413371	Compression spring for main movable contact
4	53	2	2	2	2	-----	Operating coil (See coil table on page 2)
		Δ	Δ	Δ	Δ	-----	Set of interlock contacts, springs and screws (See interlock table, page 3)

Δ Quantity variable.

OPERATING COILS, PICK-UP AND HOLDING RESISTORS, RECTIFIERS, AND AUXILIARY CONTACTORS

NOTE: The number following the form letters in the IC designation identifies the operating coils, pick-up or holding resistors, rectifiers, auxiliary contactors, and brackets. Each must be ordered separately from the table below.

EXAMPLE: - IC2800-1178-AU-2-BG requires two Cat. No. 22D63G14 operating coils and one Cat. No. IC9006A100G150EA holding resistor.

Coil No.	Fig. 4, Ref. 53 Coil Cat. No. (2 Req.)	Pick-up Resistor		Holding Resistor		Rectifier		*Auxiliary Contactor †CR Designation (1 Req.)
		Cat. No.	No. Req.	Cat. No.	No. Req.	Cat. No.	No. Req.	
1	22D63G14			IC9006A100G50EA	1			
2	22D63G14			IC9006A100G150EA	1			
‡3	22D63G14			IC9006A100G50EA	1			
‡3	22D63G14			IC9006A100G150EA	1			
‡3	22D63G14			IC9006A100G250EA	1			
4	22D63G15			IC9006A100G1000EA	1			
5	22D63G16			IC9006A100G50EA	1			
6	22D63G16			IC9006A100G150EA	1			
7	‡22D63G10			235L490G29	1	6RSPD12AHD1	4	CR2810-A14AG
8	22D63G3							
9	22D63G17			IC9006A100G5EA	1			
10	22D63G12			IC9006A100G10EA	1			
11	22D63G18							
12	22D63G17			IC9006A100G25EA	1			
13	Δ22D63G19	IC9006A100G3EA/TH	3	IC9006A200J7.5EA/TH	1			
				IC9006A200J10EA/TH	1	6RS25PB6AHD1	3	CR2810-A14AC
14	‡22D63G20			‡‡		6RS25PB3AHD1	4	CR2810-A14AG
15	22D63G14			IC9006A100G200EA	1			
16	22D63G6	‡‡		‡‡		‡‡		
17	Δ22D63G12	IC9006A100G40EA/TH	2	‡‡		6RS25PD12AHD1	2	CR2810-A14AC
18	22D63G24			IC9006A100G25EA	1			
19	22D63G14			IC9006A100G50EA	1			
20	22D63G25			IC9006A100G10EA/TH	3	6RS25PB3AHD1	2	CR2810-A14AC
21	22D63G14	‡‡		‡‡		‡‡		
22	22D63G17			IC9006A100G25EA	1			
22	Δ22D63G17			‡‡		6RS25PB6AHD1	1	CR2810-A14AC
23	22D63G17			IC9006A100G10EA	1			
24	22D63G27			‡‡				
25	22D63G5			IC9006A100G7.5EA	1			
25	‡22D63G5			235L490G28	1	6RS25PB6AHD1	3	CR2810-14AG
26	22D63G12			IC9006A100G1.0EA	1			
27	22D63G5			IC9006A100G10EA	1			
28	22D63G28			IC9006A100G.1EA	1			
29	‡22D63G17	‡‡	1	167X185G11	1	6RS25PD12AHD1	4	CR2810-14AG

IC2800-1180 CONTACTOR

GEF-4343

Coil No.	Fig. 4, Ref. 53 Coil Cat. No. (2 Req.)	Pick-up Resistor		Holding Resistor		Rectifier		*Auxiliary Contactor †CR Designation (1 Req.)					
		Cat. No.	No. Req.	Cat. No.	No. Req.	Cat. No.	No. Req.						
30	22D63G15	IC9006A100G7.5EA/TH	1	IC9006A100G1000EA	1	6RS25 PB6AHD1	2	CR2810-14AC					
31	22D63G12			IC9006A100G25EA/TH	3								
‡32	22D63G14			IC9006A100G50EA	1								
‡32	22D63G14			IC9006A100G150EA	1								
‡32	22D63G14			IC9006A100G250EA	1								
33	22D63G15			IC9006A100G1000EA	1								
				IC9006A100G100EA/TH	2								
34	22D63G8			IC9006A100G25EA/TH	1				IC9006A100G150EA/TH	1	6RS25 PD12AHD1	2	CR2810-A14AC
35	Δ22D63G28			IC9006A100G1EA/TH	1				IC9006A200J7.5EA/TH	2	6RSPB3AHD1	4	CR2810-A14AC
36	22D63G14												
37	Δ22D63G22	IC9006A100G4EA/TH	1	IC9006A200J75EA/TH	1	6RS25 PD12AHD1	4	CR2810-A14AC					
37	¶22D63G22			IC9006A200J100EA/TH	1								
				167X185G12	1								
38	22D63G29	IC9006A100G50EA/TH	1	IC9006A100G200EA/TH	2	6RS22 PD12AHD1	2	CR2810-A14AC					
				IC9006A100G250EA/TH	1								
				IC9006A100G400EA/TH	1								
				IC9006A100G350EA/TH	1								
39	22D63G35								6RS22 PD12AHD1	2	CR2810-A14AC		
51	22D63G6								2673249-80	1	6RC3K266V	4	
52	22D63G14								2673249-325	1	6RC3B269V	4	
53	22D63G14								2673249-1300	1	6RC3B269V	4	
54	22D63G14			2673249-125					2673249-1600	1	6RC3B269V	4	
55	22D63G5												
56	22D63G10												
58	22D63G14					2673249-1500	1	6RC3B269	4				
ø101	22D63G36					IC9006A100G25EA/TH	2						
ø102	22D63G23					IC9006A100G100EA/TH	2						
ø104	22D63G15			IC9006A100G500EA/TH	2								
ø109	22D63G9												
ø110	22D63G37			IC9006A100G7.5EA/TH	2								
ø115	22D63G8			IC9006A100G100EA/TH	2								
ø119	22D63G22			IC9006A100G25EA/TH	2								
ø122	22D63G17			IC9006A100G10EA/TH	2								
ø127	22D63G18			IC9006A100G4EA/TH	2								
ø128	22D63G27			IC9006A100G2EA/TH	1								
ø129	22D63G17			IC9006A100G10EA/TH	1								
ø130	22D63G35			IC9006A100G25EA/TH	1								
				IC9006A100G350EA/TH	2								

* For parts of auxiliary contactor see GEF-4210.

† Obtain complete CR designation (including coil number and interlock letter suffixes) from auxiliary contactor nameplate.

‡ Order by description and give complete nameplate data for contactor.

¶ Six required for three contactors, coils connected in series.

‡ For 125, 250, or 275 volts respectively.

Δ Four required for two contactors, coils connected in series.

ø Uses a quantity of 2 brackets, Cat. No. 125A5097P2.

NOTE: The last letter in the IC designation identifies the electrical interlocks.

EXAMPLE: - IC2800-1180-AU-22-BG requires four (4) Cat. No. IC2956A200C interlocks.

Inter-lock Letter	*Location	Interlock Switch Unit Cat. No.	No. Req.	†Interlock Contacts Set Cat. No.	‡Interlock Mounting and Operating Parts		Inter-lock Letter	*Location	Interlock Switch Unit Cat. No.	No. Req.	†Interlock Contacts Set Cat. No.	‡Interlock Mounting and Operating Parts	
					Cat. No.	No. Req.						Cat. No.	No. Req.
B	l	IC2956A200C	1	6960053G3	723B261G1	1		ul	IC2956A200C	1	6960053G3		
‡C	l,r	IC2956A200C‡	2	6960053G3	723B261G1	2	J	ur	IC2956A200A	1	6960053G3	112B9742G2	1
								ll,r	IC2956A200B	2	6960053G3		
D	r	IC2956A200C	1	6960053G3	723B261G1	1		ul,ll,r,ur	IC2956A200C	3	6960053G3	112B9742G2	1
							K	ur	IC2956A200A	1	6960053G3		
E	ul,r	IC2956A200C	2	6960053G3	112B9742G2	1		ul,ur	IC2956A200C	1	6960053G3		
	ll,r	IC2956A200A	2	6960053G3			L	ll,r	IC2956A200B	1	6960053G3	112B9742G2	1
								ll,r	IC2956A200A	2	6960053G3		
F	ul,r	IC2956A200C	2	6960053G3	112B9742G2	1		ul	IC2956A200C	1	6960053G3		
	ll,r	IC2956A200B	2	6960053G3			M	ur	IC2956A200C	1	6960053G3	112B9742G2	1
								ll,r	IC2956A200B	3	6960053G3		
G	all	IC2956A200C	4	6960053G3	112B9742G2	1		ul	IC2956A200C	1	6960053G3		
								ur	IC2956A200B	3	6960053G3	112B9742G2	1
H	ul,ur	IC2956A200C	1	6960053G3	112B9742G2	1		ll,r	IC2956A200B	3	6960053G3		
	ll,r	IC2956A200A	3	6960053G3									

IC2800-1180 CONTACTOR

Interlock Letter	*Location	Interlock Switch Unit Cat. No.	No. Req.	†Interlock Contacts Set Cat. No.	‡Interlock Mounting and Operating Parts		Interlock Letter	*Location	Interlock Switch Unit Cat. No.	No. Req.	†Interlock Contacts Set Cat. No.	‡Interlock Mounting and Operating Parts	
					Cat. No.	No. Req.						Cat. No.	No. Req.
N	ul,ur	IC2956A200C	3	6960053G3	112B9742G2	1	BY	ul,ur	IC2956A200C	1	6960053G3	112B9742G1	1
		IC2956A200B	1	6960053G3					IC2956A200B	1	6960053G3		
P	ul,lr	IC2956A200C	2	6960053G3	112B9742G2	1	CE	ul,r,lr	IC2956A200C	3	6960053G3	112B9742G2	1
		IC2956A200B	1	6960053G3					IC2956A205C	1	6960053G24		
		IC2956A200A	1	6960053G3					IC2956A200B	1	6960053G3		
R	ul,lr	IC2956A200C	3	6960053G3	112B9742G2	1	DE	ul,r,lr	IC2956A200C	1	6960053G3	112B9742G1	1
		IC2956A200A	1	6960053G3					IC2956A205C	1	6960053G24		
S	ul,lr	IC2956A200C	1	6960053G3	112B9742G2	1	DF	ul,ur	IC2956A200B	1	6960053G3	112B9742G1	1
		IC2956A200B	1	6960053G3					IC2956A200C	1	6960053G3		
T	l,r	IC2956A200C	2	6960053G3	112B9742G2	1	DG	ul,ur	IC2956A200AJ	1	6960053G3	112B9742G1	1
		IC2956A200A	2	6960053G3					IC2956A200AK	1	6960053G3		
V	ul,r	IC2956A200C	2	6960053G3	112B9742G1	1	DH	ul,r	IC2956A200AJ	2	6960053G3	112B9742G1	1
W	l,r	IC2956A200C	1	6960053G3	112B9742G1	1	DJ	ul,ur	IC2956A200AJ	1	6960053G3	112B9742G1	1
		IC2956A200A	1	6960053G3					IC2956A200AH	1	6960053G3		
Y	l,r	IC2956A200C	1	6960053G3	112B9742G1	1	HA	u,l	IC2956A200A	2	6960053G3	112B9742G3	1
		IC2956A200B	1	6960053G3					IC2956A200A	1	6960053G3		
fBB	l,r	IC2956A200C	1	6960053G3	723B261G1	1	HB	u,lo.	IC2956A200A	1	6960053G3	112B9742G3	1
		IC2956A205C	2	6960053G24	723B261G2				IC2956A200B	1	6960053G3		
BE	ul,lr	IC2956A200C	2	6960053G3	112B9742G2	1	HC	u,lo.	IC2956A200A	1	6960053G3	112B9742G3	1
		IC2956A200A	2	6960053G3					IC2956A200C	1	6960053G3		
BF	ul,lr	IC2956A200C	2	6960053G3	112B9742G2	1	HD	u,lo.	IC2956A200B	1	6960053G3	112B9742G3	1
		IC2956A200B	2	6960053G3					IC2956A200A	1	6960053G3		
BG	all	IC2956A200C	4	6960053G3	112B9742G2	1	HE	u,lo.	IC2956A200B	1	6960053G3	112B9742G3	1
BH	ul,ur,lr	IC2956A200C	1	6960053G3	112B9742G2	1	HF	u,lo.	IC2956A200C	2	6960053G3	112B9742G3	1
		IC2956A200A	3	6960053G3					IC2956A200C	1	6960053G3		
BJ	ul,lr	IC2956A200C	1	6960053G3	112B9742G2	1	HG	u,lo.	IC2956A200C	1	6960053G3	112B9742G3	1
		IC2956A200A	1	6960053G3					IC2956A200A	1	6960053G3		
BK	ul,lr,ur	IC2956A200C	3	6960053G3	112B9742G2	1	HH	u,lo.	IC2956A200C	1	6960053G3	112B9742G3	1
		IC2956A200A	1	6960053G3					IC2956A200B	1	6960053G3		
BL	ul,lr	IC2956A200C	1	6960053G3	112B9742G2	1	HJ	u,lo.	IC2956A200B	2	6960053G3	112B9742G3	1
		IC2956A200B	1	6960053G3					IC2956A200C	1	6960053G3		
BM	ul,ur,lr	IC2956A200C	1	6960053G3	112B9742G2	1	HK	u,lo.	IC2956A200B	1	6960053G3	112B9742G3	1
		IC2956A200B	3	6960053G3					IC2956A200C	1	6960053G3		
BN	ul,lr,ur	IC2956A200C	3	6960053G3	112B9742G2	1	JA	u,lo.	IC2956A200A	2	6960053G3	112B9742G4	1
		IC2956A200B	1	6960053G3					IC2956A200A	1	6960053G3		
BP	ul,lr	IC2956A200C	2	6960053G3	112B9742G2	1	JB	u,lo.	IC2956A200A	1	6960053G3	112B9742G4	1
		IC2956A200B	1	6960053G3					IC2956A200B	1	6960053G3		
BR	ul,lr,lr	IC2956A200C	3	6960053G3	112B9742G2	1	JC	u,lo.	IC2956A200A	1	6960053G3	112B9742G4	1
		IC2956A200A	1	6960053G3					IC2956A200C	1	6960053G3		
BS	ul,ur,lr	IC2956A200C	2	6960053G3	112B9742G2	1	JD	u,lo.	IC2956A200B	1	6960053G3	112B9742G4	1
		IC2956A200B	1	6960053G3					IC2956A200A	1	6960053G3		
BT	ul,ur,lr	IC2956A200C	2	6960053G3	112B9742G2	1	JE	u,lo.	IC2956A200B	1	6960053G3	112B9742G4	1
		IC2956A200A	2	6960053G3					IC2956A200C	1	6960053G3		
BV	ul,ur	IC2956A200C	2	6960053G3	112B9742G1	1	JF	u,lo.	IC2956A200C	2	6960053G3	112B9742G4	1
		IC2956A200B	2	6960053G3					IC2956A200C	1	6960053G3		
BW	ul,ur	IC2956A200C	1	6960053G3	112B9742G1	1	JG	u,lo.	IC2956A200C	1	6960053G3	112B9742G4	1
		IC2956A200A	1	6960053G3					IC2956A200A	1	6960053G3		
		IC2956A200C	2	6960053G3	112B9742G2	1	JH	u,lo.	IC2956A200C	1	6960053G3	112B9742G4	1
		IC2956A200A	2	6960053G3					IC2956A200B	1	6960053G3		
		IC2956A200C	2	6960053G3	112B9742G1	1	JJ	u,lo.	IC2956A200B	2	6960053G3	112B9742G4	1
		IC2956A200A	1	6960053G3					IC2956A200C	1	6960053G3		
		IC2956A200C	1	6960053G3	112B9742G1	1	JK	u,lo.	IC2956A200B	1	6960053G3	112B9742G4	1
		IC2956A200A	1	6960053G3					IC2956A200C	1	6960053G3		

* ul, upper left; ur, upper right; ll, lower left; lr, lower right; u, upper; lo., lower.

† Set of interlock contacts includes movable and stationary contacts, springs, and contact-holding screws for one switch unit.

‡ Requires pin Cat. 2480060. Cat. No. of interlocks does not include pin.

¶ For mounting and operating parts, see page 8.

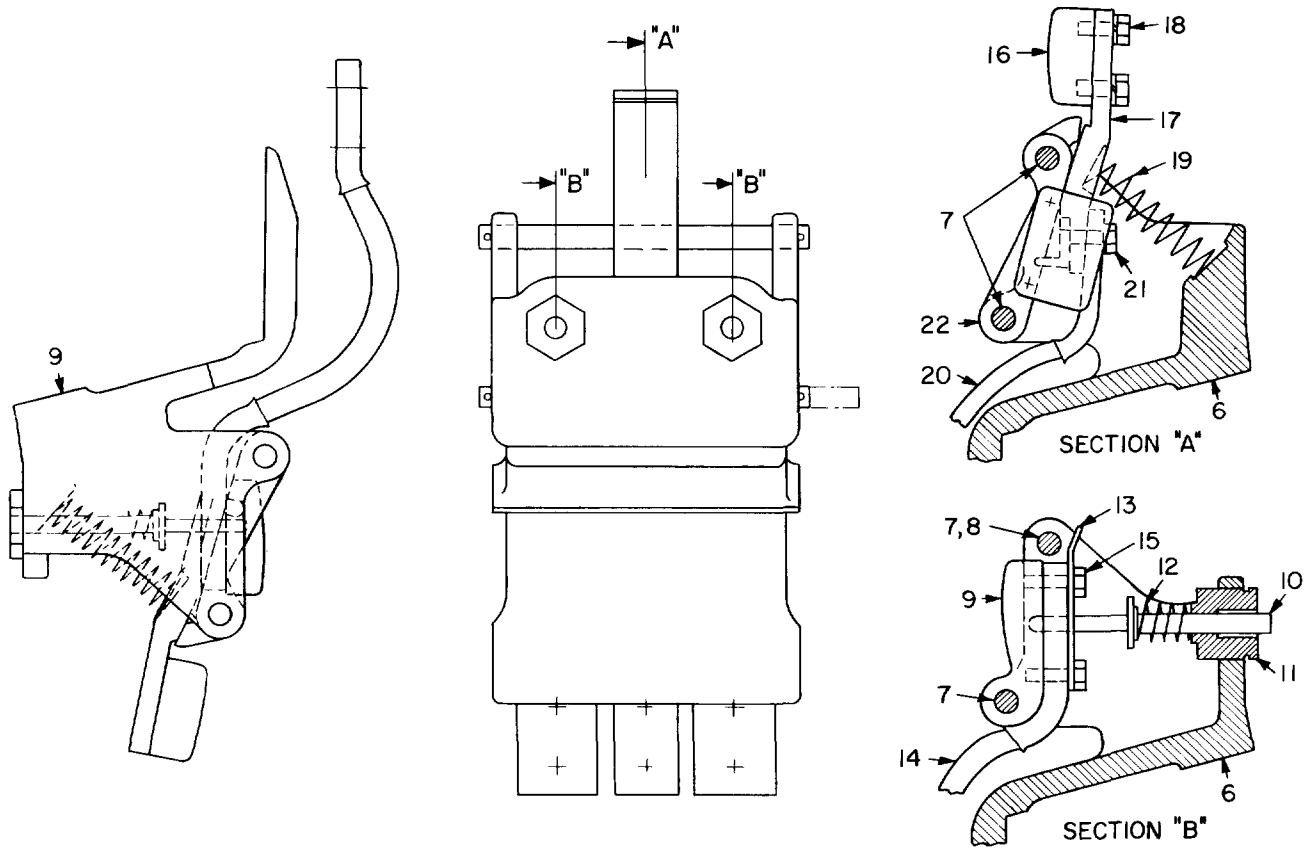


Fig. 2. Armature and moving contact parts

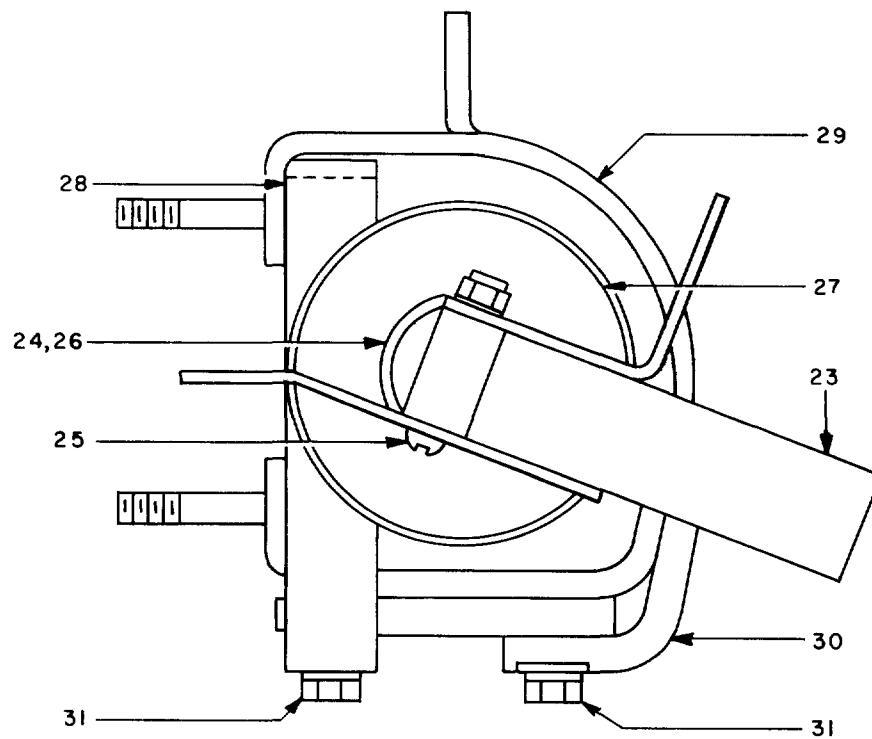


Fig. 3. Blowout coil and stationary contact parts

IC2800-1180 CONTACTOR

Fig. No.	Ref. No.	Number Required for IC2800-1180-				Catalog Number	Description
		AU	AW	BB	BC		
1	1	1	1	1	1	106B9292G1	Arc chute, complete
		1	1	1	1	4330804	Arc chute side, right-hand
		1	1	1	1	4330805	Arc chute side, left-hand
		1	1	1	1	2476427	Stud fastening arc chute sides together
		1	1	1	1	N57P21044B6	Screw fastening arc chute sides (1/4-20, 2 3/4 in., pan hd., pro. fin.)
1	2	1	1	1	1	2476452	Support for arc chute, right-hand
		1	1	1	1	2476453	Support for arc chute, left-hand
1	3	2	2	2	2	N22P23040B6	Screw fastening support to base (5/16-18 x 2 1/2 in., pan hd., pro. fin.)
1	4	1	1	1	1	2459880P2	Arcing horn
1	5	1	1	1	1	N26P23008B6	Screw fastening arcing horn to magnet frame (5/16-18, 1/2 in., hex. hd., pro. fin.)
2	6	1	1	-	-	148B6227P1	Armature bracket
		-	-	1	1	4335197P4	Armature bracket
2	7	2	2	2	2	2459857	Retaining pin for fulcrum support
2	8	4	4	4	4	N503P1212B6	Cotter pin for retaining pin (1/8 by 3/4 in.)
2	9	2	2	2	2	3866756G2	Main movable contact tip
2	10	2	2	2	2	8626315G2	Fulcrum pin for main movable contact
2	11	2	2	2	2	2459876	Adjusting nut for fulcrum pin
2	12	2	2	2	2	2413371	Compression spring for main movable contact
2	13	2	2	2	2	2459864	Stop plate for movable contact
2	14	2	2	2	2	4338327G1	Shunt for main movable contact
2	15	4	4	4	4	N26P23014B6	Screw fastening shunt and stop plate for main movable contact (5/16-18, 7/8 in., hex. hd. slot., pro. fin.)
2	16	1	1	-	1	2459875	Movable arcing contact tip
		-	-	1	-	139B8096G2	Movable arcing contact tip
2	17	1	1	1	1	5303399G1	Tip support
2	18	2	2	2	2	N26P23018B6	Screw fastening arcing contact to support (5/16-18, 1 1/8 in., hex. hd., pro. fin.)
2	19	1	1	1	1	2413372	Compression spring for movable arcing contact
2	20	1	1	1	1	4338327G2	Shunt for movable arcing contact
2	21	1	1	1	1	N26P23012B6	Screw fastening shunt to movable arcing contact support (5/16-18, 3/4 in., hex. hd., slot., pro. fin.)
2	22	1	1	1	1	2833573G1	Fulcrum support with guide plate
3	23	1	1	1	1	2833563G1	Pole piece assembly, left-hand
		1	1	1	1	2833563G2	Pole piece assembly, right-hand
3	24	1	1	1	1	2459443	Magnet core for blowout coil
3	25	1	1	1	1	N22P21032B6	Screw fastening pole pieces to magnet frame (1/4-20, 2 in., hex. hd., pro. fin.)
3	26	1	1	1	1	205A4036P1	Insulation tube for magnet core
3	27	2	2	2	2	125A6760P3	Insulation flange for blowout coil and magnet frame
3	28	1	1	1	1	106B9291G1	Blowout coil
		8	8	8	8	287A103P7	Insulation washer between turns of blowout coil
3	29	1	1	1	1	3865674G1	Support for stationary contact and blowout coil
3	30	1	1	-	1	2458490	Stationary arcing contact tip
		-	-	1	-	139B8096G1	Stationary arcing contact tip
3	31	2	2	2	2	N22P23014B6	Screw fastening blowout coil or stationary contact tip to support (5/16-18, 7/8 in., hex. hd., pro. fin.)
1	32	2	2	2	2	4327715G1	Connection block
1	33	1	1	1	1	9034388G2	Main stationary contact
1	34	2	2	2	2	N22P25028B6	Screw fastening contact tip to connection block 3/8-16, 1 1/4 in., hex. hd., pro. fin.)
1		Δ	Δ	Δ	Δ	5356723	Shim for connection block
1	35	3	3	3	3	194A1872G1	Spacer for connection block
1	36	2	2	2	2	N22P25014B6	Screw fastening arcing contact shunt to connection block (3/8-16, 7/8 in., hex. hd., pro. fin.)
1	37	4	4	4	4	N22P25020B6	Screw fastening main contact shunt (3/8-16, 1 1/4 in., hex. hd., pro. fin.)
1	38	4	4	4	4	286A113P80	Screw fastening connection block to base
1	39	1	1	1	1	129B8774P2	Connection bar
1	40	1	1	1	1	194A1872G1	Spacer for upper bus assembly
1	41	1	1	1	1	286A113P80	Screw fastening connection bar to spacer
1	42	1	1	1	1	147A4711P1	Support bracket for connection bar
1	43	2	2	2	2	N22P23040B6	Mounting screw for support bracket (5/16-18, 2 1/4 in., hex. hd., pro. fin.)
1	44	1	1	1	1	N25P25020B6	Screw fastening connection bar to blowout coil and support bracket (3/8-16, 1 1/8 in., hex. hd., pro. fin.)
1	45	1	1	1	1	286A113P80	Mounting screw for spacer

Δ Quantity variable.

IC2800-1180 CONTACTOR

GEF-4343

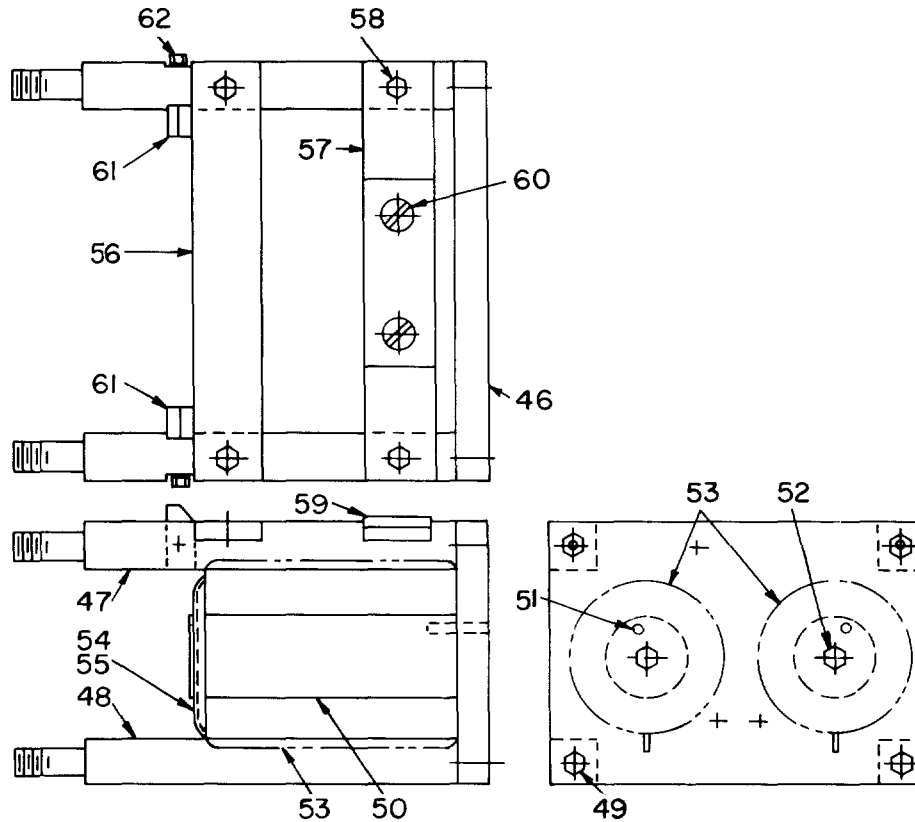


Fig. 4. Magnet frame and associated parts

Fig. No.	Ref. No.	Number Required for IC2800-1180-				Catalog Number	Description
		AU	AW	BB	BC		
4	46	1	1	1	1	3867766	End plate for magnet frame
4	47	1	1	1	1	205A8965P1	Support post for end plate, upper
		1	1	1	1	205A8965P2	Support post for end plate, upper
4	48	2	2	2	2	2459865	Support post for end plate, lower
4	49	4	4	4	4	N22P29020B6	Bolt fastening end plate to support (1/2-13, 1 1/4 in., hex. hd., pro. fin.)
4	50	2	2	2	2	8072651G2	Magnet core for operating coil
4	51	2	2	2	2	N509P1920	Dowel pin for magnet core (3/16 by 1 1/4 in.)
4	52	2	2	2	2	N22P33024B6	Bolt fastening end plate to magnet core (5/8-11, 1 1/2 in., hex. hd., pro. fin.)
4	53	2	2	2	2	See coil table	Operating coil
4	54	2	2	2	2	8626009P10	Retaining washer for operating coil
4	55	2	2	2	2	147A5848P6	Spacer for operating coil
4	56	1	1	1	1	2459872	Fulcrum bar for armature
4	57	1	1	1	1	2459873	Stop bar for armature
4	58	4	4	4	4	N22P25016B6	Screw fastening fulcrum bar or stop bar to support (3/8-16, 1 in., hex. hd., pro. fin.)
4	59	1	1	1	1	2459874	Stop plate for stop bar
4	60	2	2	2	2	N51P16008B6	Screw fastening stop plate to stop bar (10-32, 1/2 in., fl. hd., pro. fin.)
4	61	2	2	2	2	2459871	Guide for armature
4	62	2	2	2	2	N26P21016B6	Screw fastening armature guide to upper support post (1/4-20, 1 in. hex. hd. slot., pro. fin.)
1	63	4	4	4	4	6958533P3	Pad between magnet frame and base
1	64	1	1	1	1	2470912	Connection strip for magnet frame

IC2800-1180 CONTACTOR

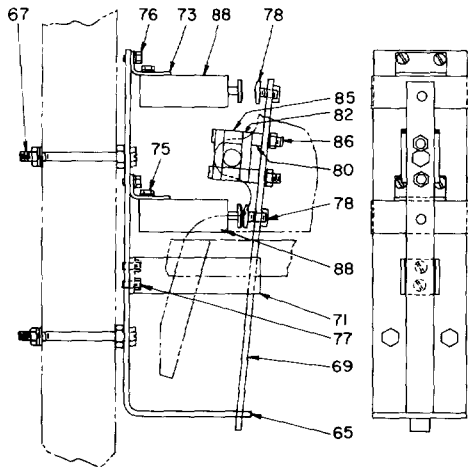


Fig. 5. Cat. 723B261G1 or -G2 parts

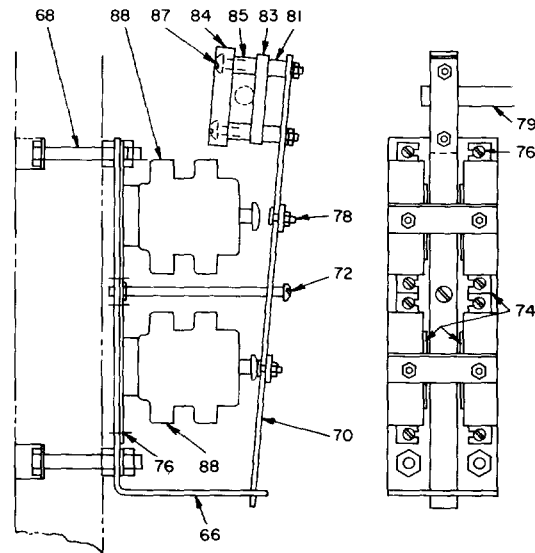


Fig. 6. Cat. 112B9742G1, -G2, -G3 or -G4 parts

Fig. No.	Ref. No.	Number Required for						Catalog Number	Description
		723B261G1	723B261G2	112B9742G1	112B9742G2	112B9742G3	112B9742G4		
5	65	1	1	-	-	-	-	723B262P1	Supporting bracket for operating arm
6	66	-	-	1	1	-	-	112B9784P1	Supporting bracket for operating arm
		-	-	-	-	1	1	194A7524P1	Supporting bracket for operating arm
5	67	3	3	-	-	-	-	N26P21048B	Screw fastening supporting bracket to base (1/4-20, 3 in. hex. hd., pro. fin.)
6	68	-	-	3	3	2	2	N22P23040B	Screw fastening supporting bracket to base (5/16-18, 2 1/4 in., hex. hd., pro. fin.)
5	69	1	1	-	-	-	-	723B262P3	Operating arm for interlocks
6	70	-	-	1	1	-	-	112B9784G1	Operating arm for interlocks
		-	-	-	-	1	1	194A7524P1	Operating arm for interlocks
5	71	1	1	-	-	-	-	723B262P2	Guide for operating arm
6	72	-	-	1	1	1	1	N57P16064B6	Guide screw for operating arm (10-32, 4 in., pan hd. slot., pro. fin.)
5	73	Δ	Δ	Δ	-	-	-	574A240P1	Support bracket for interlock
6	74	-	-	Δ	Δ	Δ	Δ	575A555P1	Support bracket for interlock
5	75	Δ	Δ	Δ	Δ	Δ	Δ	119A4655P5	Screw fastening interlock to bracket (2 required per interlock)
5,6	76	Δ	Δ	Δ	Δ	Δ	Δ	N112P15006B6	Screw fastening interlock support bracket to operating arm support (8-32, 3/8 in., thread-cutting, pro. fin.)
5	77	2	2	-	-	-	-	N112P15006B6	Screw fastening operating arm guide to support (8-32, 3/8 in., thread-cutting, pro. fin.)
5,6	78	2	2	2	4	2	2	N96P16012B	Weld screw, to operate interlock switch unit plunger (10-32, 3/4 in., pro. fin.)
6	79	-	-	1	1	-	-	147A5788P1	Operating pin
		-	-	-	-	1	1	147A5788P1	Operating pin
5	80	2	2	-	-	-	-	287A874P8	Spacer between operating arm and inner clamp
6	81	-	-	2	2	2	2	287A874P12	Spacer between operating arm and inner clamp
5	82	2	2	-	-	-	-	2477673P1	Inner or outer clamp for spacer
6	83	-	-	1	1	1	1	147A5811P1	Inner clamp for pin
6	84	-	-	1	1	1	1	147A5811P2	Outer clamp for pin
5,6	85	2	2	2	2	2	2	2477688P1	Spacer between inner and outer clamp
5	86	2	2	-	-	-	-	N57P16032B	Screw fastening inner and outer clamps and spacers to operating arm (10-32, 2 in., pan hd., slot., pro. fin.)
6	87	-	-	2	2	2	2	N57P15032B	Screw fastening inner and outer clamps and spacers to operating arm (8-32, 2 in., pan hd., slot., pro. fin.)
5,6	88	‡	‡	‡	‡	‡	‡	See interlock table	Electrical interlock

Δ As required.
‡ Quantity variable.