

Product Information Packet

November 7, 2016

Data shown is for the current revision model #. Ensure your nameplate model # matches.

Model Number:	5KS143ATE105A
Catalog Number:	E709
Instruction Manual:	GEI-M1023
Connection Diagram:	GEM2034E-FIG3
Outline Drawing:	358B6213AA

Accessory Connection Diagrams

Bearing Thermocouple:	None	Heater:	None
RTD:	None	Thermistor:	None
Thermostat:	None	Winding Thermocouple:	None
Bearing RTD:	None		

Table of Contents

Specification	01
Performance Characteristics	02
Outline Drawing	03
Connection Drawing(s)	04



Marks:

MODEL NUMBER:	5KS143ATE105A	Estimated Weight:	48 Lbs
Outline Drawing:	358B6213AA	Time Rating:	CONT
Connection Diagram:	GEM2034E-FIG3	Enclosure:	DP
Instruction Book:	GEI-M1023	Encl Construction:	OPEN
Design Code:	14AD0009A	Ambient Max(°C):	40
Type:	KS	Alt Ambient Max(°C):	--
Frame:	143T	Insulation Class:	F
Phases:	3	NEMA Design:	B
Poles:	2	Nominal Efficiency:	84 %
Output Power:	1.5HP 1.1KW	Guaranteed Efficiency:	81.5
RPM:	3495	3/4 Load Efficiency:	87.5
Voltage:	230/460	KVA Code:	M
Hertz:	60	Max KVAR:	.4
Amps - FL:	3.8/1.9	Power Factor:	86.5
Service Factor:	1.15	Bearing - DE:	6205ZZ
Alt Service Factor:	--	Bearing - ODE:	6205ZZ

Enclosure is Dripproof

Stamped Nameplate Notes:**Additional Information:**

2 POLE DP
 LRA: 36/18
 NO. OF MOTOR LEADS: 9
 CONDUIT BOX VOLUME (IN³): 30.2
 CONDUIT BOX MTL: STAMPED STEEL
 GREASE TYPE: SHELL ALVANIA R3 LITHIUM GREASE
 USABLE AT 200V @ 1.5 HP, 4.3 AMPS @ 1.0 SF
 50 HZ DATA: 1.5 HP, 200/400V, 4.4/2.2 AMPS @ 1.0 SF, 2880 RPM
 SOUND POWER: 58.6
 DMK, 06/04, DATA UPDATE 11/2004
 INVERTER DUTY PER NEMA MG1 PART 31
 FOR VARIABLE TORQUE LOADS

Performance Characteristics

1st Winding 1st Connection

Design: 14AD0009A

Marks:

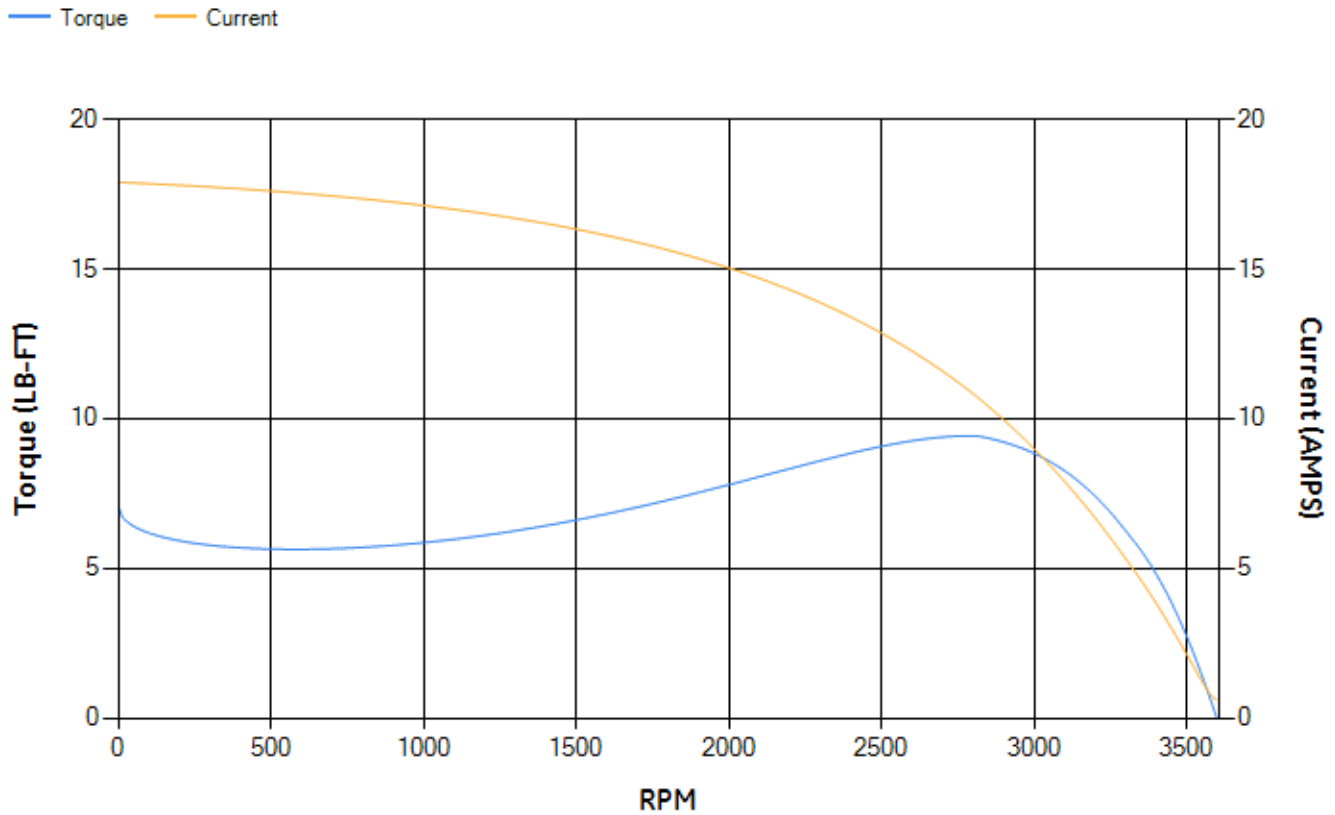
LOAD %	125.0	115.0	100.0	75.0	50.0	25.0	0.0
% EFF	85.96	86.5	87.32	87.51	86.31	79.91	0.00
% PF	91.4	90.87	89.71	86.1	77.98	58.06	13.04
AMPS	2.23	2.05	1.79	1.4	1.04	0.76	0.6

TORQ(FL)#FT	2.25	TORQ(LR)%FL	314.4	TORQ(BD)%FL	404.8
AMPS(LR)	17.9	PF AT START	0.6		

This motor is capable of two cold or one hot start with a maximum connected load inertia of 14 Lb-Ft Sq (0.59 Kg-meter Sq) at 100% voltage, where the load torque varies with the square of the speed. Acceleration time with maximum inertia and the above load type is 27 seconds. Safe stall time at 100% voltage is 48 seconds cold, 42 seconds hot. Rotor inertia is 0.05 Lb-Ft Sq (0 Kg-meter Sq).

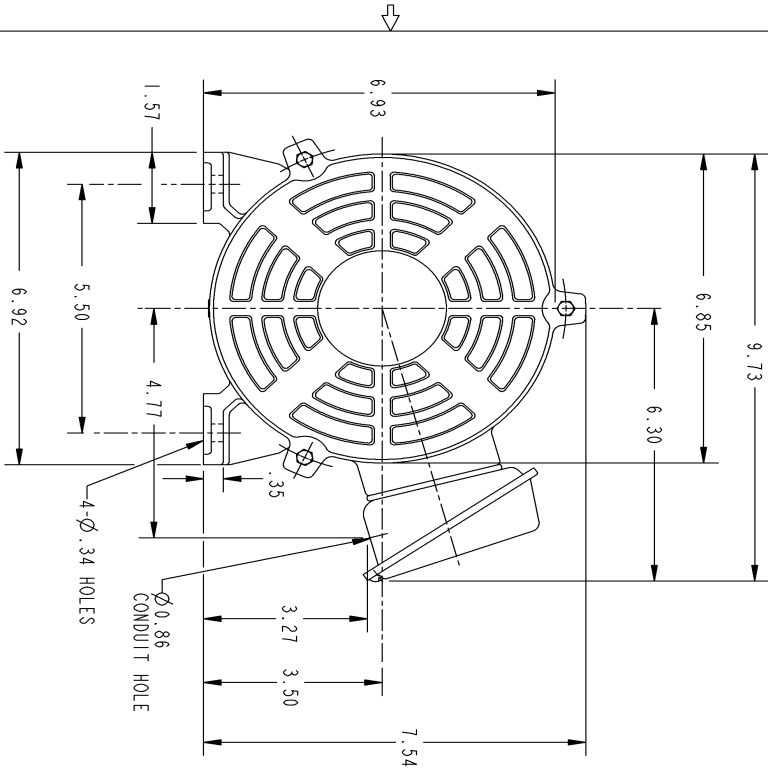
Open Circuit A-C:	0.3	Short Circuit D-C:	0.005
Short Circuit A-C:	0.007	X/R Ratio:	1.855
Stator Slots:	24	Rotor Slots:	28

Speed Torque Current Curve (First Connection, First Speed)



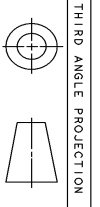
NAME:501452442 OBJECT:358B6213AA DATE:23-May-07 23:02:23

Marks:



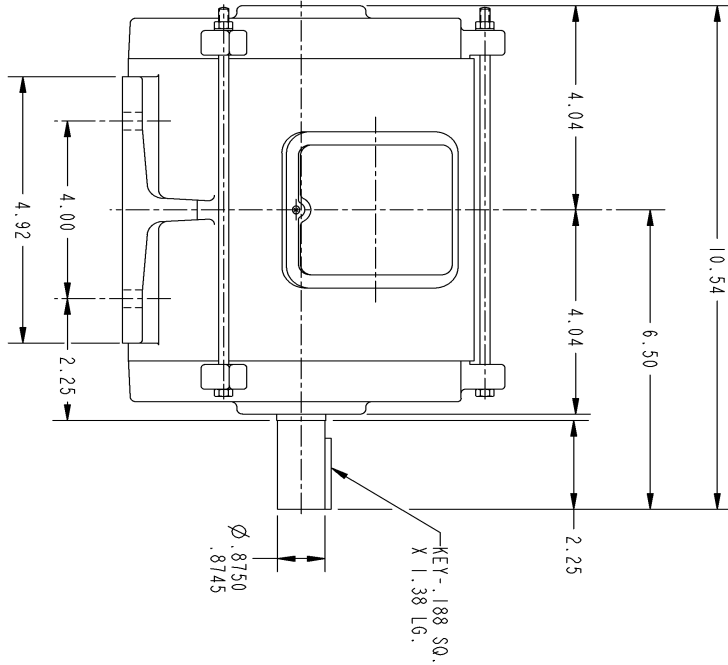
NOTES :

1. CONDUIT BOX MAY BE PLACED WITH THE ENTRANCE DOWN, UP OR ON EITHER SIDE.
2. F-1 ASM AS SHOWN.
3. F-2 ASM - HAS CONDUIT BOX ON OPPOSITE SIDE.



THIRD ANGLE PROJECTION

B SIZE DRAWING FOR 358B6213AA		GE PROPRIETARY INNOVATION	
<p>This drawing is the property of General Electric Company (GE) and contains confidential information. It is intended for use only by those authorized by GE. It is not to be distributed, copied, or used for any other purpose without the written consent of GE. This drawing shall be returned to GE upon its request and shall be subject to certain restrictions under U.S. Export Control laws and regulations.</p>			
REV.	DESCRIPTION	DATE	APPROVED
1	Updated dimensions	9/20/06	
2	ISAAC 07-0770	05/02/07	R. KOHNE



UNLESS OTHERWISE SPECIFIED:		SIGNATURES		DATE	
DIMENSIONS ARE IN INCHES		DRAWN		P. RAJU 03/28/03	
TOLERANCE ON:		CHECKED		PRABHAKAR 03/27/03	
2 PL. DECIMALS ± .		ENGR			
3 PL. DECIMALS ± .		ISSUED		PRABHAKAR 03/27/03	
ANGLES ± 0.5		APPLIED PRACTICES			
MATERIAL:		SIZE DRAWING		SCALE: DRAWING SCALE	
		B		358B6213AA	
		REV.		2	
DISTRIBUTION:		GENERAL ELECTRIC COMPANY		Fort Wayne, Indiana	
		Systems		OUTLINE	
		143T - OPEN DRIP PROOF			

Marks:

Connection Diagram
GEM2034E-FIG3

