

Product Information Packet

November 8, 2016

Data shown is for the current revision model #. Ensure your nameplate model # matches.

Model Number:	5KS143STE109A
Catalog Number:	M7701
Instruction Manual:	GEI-M1031
Connection Diagram:	GEM2034E-FIG203
Outline Drawing:	358B6269AA

Accessory Connection Diagrams			
Bearing Thermocouple:	None	Heater:	None
RTD:	None	Thermistor:	None
Thermostat:	None	Winding Thermocouple:	None
Bearing RTD:	None		

Table of Contents	
Specification	01
Performance Characteristics	02
Outline Drawing	03
Connection Drawing(s)	04

Marks:

MODEL NUMBER:	5KS143STE109A	Estimated Weight:	66 Lbs
Outline Drawing:	358B6269AA	Time Rating:	CONT
Connection Diagram:	GEM2034E-FIG203	Enclosure:	TEFC
Instruction Book:	GEI-M1031	Encl Construction:	SD
Design Code:	14AD0012A	Ambient Max(°C):	40
Type:	KS	Alt Ambient Max(°C):	--
Frame:	143T	Insulation Class:	F
Phases:	3	NEMA Design:	B
Poles:	2	Nominal Efficiency:	84.0 %
Output Power:	1.5HP 1.1KW	Guaranteed Efficiency:	81.5
RPM:	3515	3/4 Load Efficiency:	87.8
Voltage:	230/460	KVA Code:	M
Hertz:	60	Max KVAR:	0.5
Amps - FL:	3.8/1.9	Power Factor:	87.5
Service Factor:	1.15	Bearing - DE:	6205ZZC3
Alt Service Factor:	--	Bearing - ODE:	6205ZZC3

Enclosure is Totally Enclosed Fan-Cooled

Stamped Nameplate Notes:

USABLE AT 200V @ 1.5 HP, 4.0 AMPS @ 1.0 SF

LRA: 39.6/19.8

50HZ DATA: 1.0 HP,200/400V, 3.4/1.7 AMPS @ 1.15 SF

50HZ DATA: 1.5HP, 200/400V,4.4/2.2 AMPS @ 1.00 SF

GREASE TYPE: SHELL ALVANIA R3 LITHIUM GREASE

Additional Information:

CONDUIT BOX MATERIAL: CAST IRON

SUITABLE FOR USE IN CLASS I DIVISION 2 LOCATIONS

CLASS I DIVISION 2 GROUPS A,B,C,D T3C

CLASS I ZONE 2 IIC T3C



Performance Characteristics

1st Winding 1st Connection

Design: 14AD0012A

Marks:

LOAD %	125.0	115.0	100.0	75.0	50.0	25.0	0.0
% EFF	86.54	87.01	87.74	87.8	86.48	79.97	0.00
% PF	90.29	89.5	87.85	83.07	73.19	51.74	10.92
AMPS	2.25	2.07	1.82	1.44	1.11	0.85	0.71

TORQ(FL)#FT 2.24
AMPS(LR) 19.82

TORQ(LR)%FL 339.75
PF AT START 0.63

TORQ(BD)%FL 444.01

This motor is capable of two cold or one hot start with a maximum connected load inertia of 11 Lb-Ft Sq (0.46 Kg-meter Sq) at 100% voltage, where the load torque varies with the square of the speed. Acceleration time with maximum inertia and the above load type is 19 seconds. Safe stall time at 100% voltage is 45 seconds cold, 34 seconds hot. Rotor inertia is 0.05 Lb-Ft Sq (0 Kg-meter Sq).

Open Circuit A-C: 0.28

Short Circuit D-C: 0.004

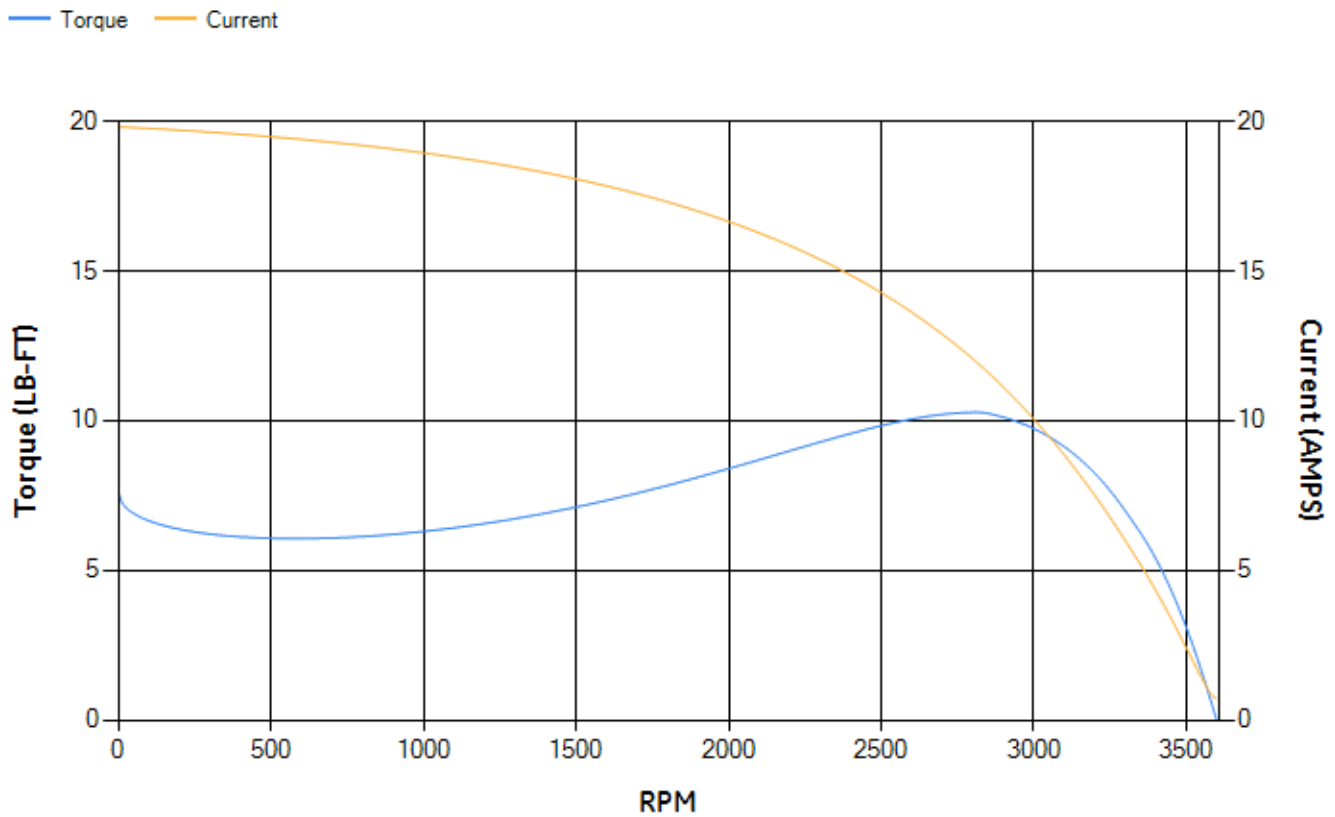
Short Circuit A-C: 0.007

X/R Ratio: 1.602

Stator Slots: 24

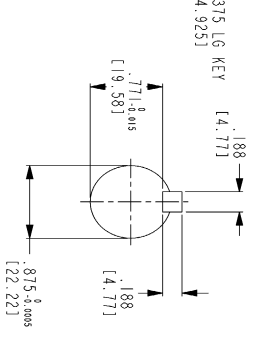
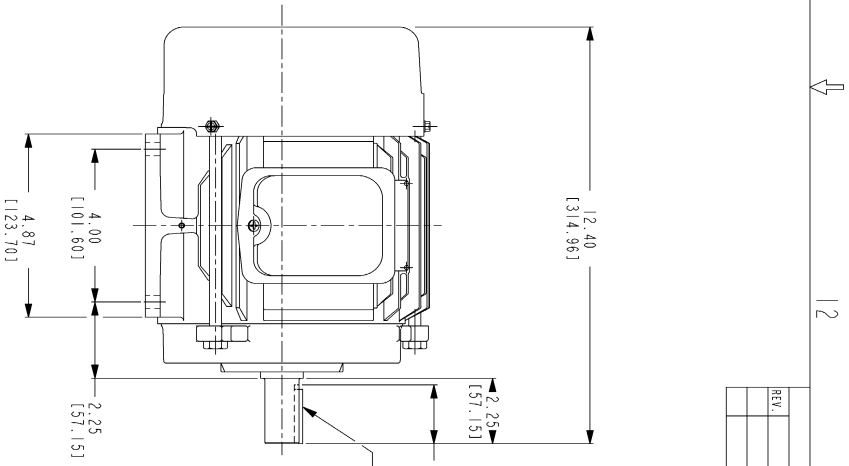
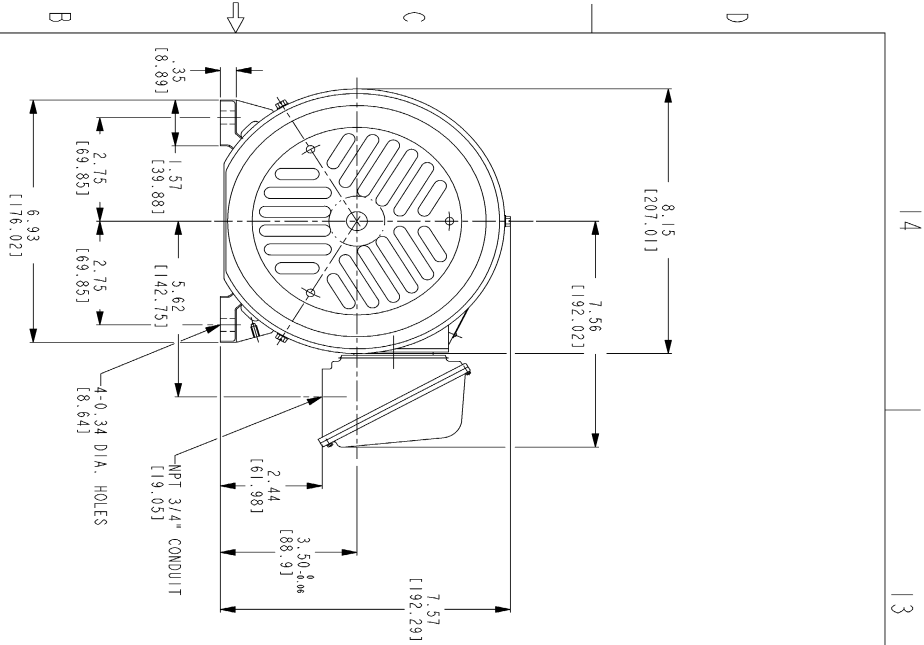
Rotor Slots: 28

Speed Torque Current Curve (First Connection, First Speed)

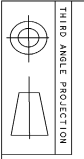


NAME:501291659 OBJECT:358B6269AA DATE:31-Dec-07 11:31:44

Marks:



- NOTES:
1. DIMENSIONS ARE IN INCHES.
 2. F-1 ASM AS SHOWN.
 3. F-2 ASM - HAS CONDUIT BOX ON OPPOSITE SIDE.
 4. BRACKETED DIMENSIONS ARE METRIC (MILLIMETERS)
 5. IC411, IP94, IMB34 APPLY.



THIRD ANGLE PROJECTION

Part must conform to SI 900000 Sect 4, Toxicity Procedure

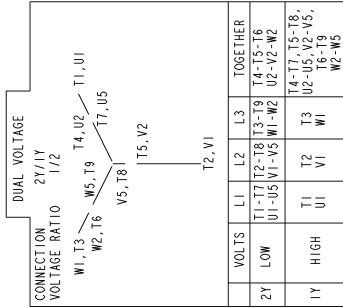
FOR ADDITIONAL INFO REFER TO:	SIGNATURES	DATE
APPROVED		
DESIGNED		
CHECKED		
DATE		
ISSUED		

GE Consumer & Industrial		GENERAL ELECTRIC COMPANY	
OUTLINE			
FTD - 143T TERC CE MARK			
471 CU IN CONDUIT BOX			
TITLE 358B6269AA	SCALE: C	SHEET 1 OF 1	REV 0

REV.	DESCRIPTION	DATE	APPROVED

Marks:

Connection Diagram
GEM2034E-FIG203



NAME: 500903578 OBJECT: GEM2034E-FIG203 DATE: 03-Nov-06 13:53:10