

# Product Information Packet

November 9, 2016

Data shown is for the current revision model #. Ensure your nameplate model # matches.

<b>Model Number:</b>	<b>5KS145STE105A</b>
<b>Catalog Number:</b>	<b>M7702</b>
<b>Instruction Manual:</b>	GEI-M1031
<b>Connection Diagram:</b>	GEM2034E-FIG203
<b>Outline Drawing:</b>	358B6269AB

<b>Accessory Connection Diagrams</b>			
<b>Bearing Thermocouple:</b>	None	<b>Heater:</b>	None
<b>RTD:</b>	None	<b>Thermistor:</b>	None
<b>Thermostat:</b>	None	<b>Winding Thermocouple:</b>	None
<b>Bearing RTD:</b>	None		

<b>Table of Contents</b>	
Specification	01
Performance Characteristics	02
Outline Drawing	03
Connection Drawing(s)	04



**Marks:**

<b>MODEL NUMBER:</b>	<b>5KS145STE105A</b>	<b>Estimated Weight:</b>	67 Lbs
<b>Outline Drawing:</b>	358B6269AB	<b>Time Rating:</b>	CONT
<b>Connection Diagram:</b>	GEM2034E-FIG203	<b>Enclosure:</b>	TEFC
<b>Instruction Book:</b>	GEI-M1031	<b>Encl Construction:</b>	SD
<b>Design Code:</b>	14AD0013A	<b>Ambient Max(°C):</b>	40
<b>Type:</b>	KS	<b>Alt Ambient Max(°C):</b>	--
<b>Frame:</b>	145T	<b>Insulation Class:</b>	F
<b>Phases:</b>	3	<b>NEMA Design:</b>	B
<b>Poles:</b>	2	<b>Nominal Efficiency:</b>	85.5 %
<b>Output Power:</b>	2HP 1.5KW	<b>Guaranteed Efficiency:</b>	82.5
<b>RPM:</b>	3505	<b>3/4 Load Efficiency:</b>	89.6
<b>Voltage:</b>	230/460	<b>KVA Code:</b>	L
<b>Hertz:</b>	60	<b>Max KVAR:</b>	0.5
<b>Amps - FL:</b>	4.8/2.4	<b>Power Factor:</b>	90.5
<b>Service Factor:</b>	1.15	<b>Bearing - DE:</b>	6205ZZC3
<b>Alt Service Factor:</b>	--	<b>Bearing - ODE:</b>	6205ZZC3

**Enclosure is Totally Enclosed Fan-Cooled**

---

**Stamped Nameplate Notes:**

USABLE AT 200V @ 2 HP, 4.2 AMPS @ 1.0 SF

LRA: 49.6/24.8

50HZ DATA: 1.5 HP, 200/400V, 4.6/2.3 AMPS @ 1.15 SF

50HZ DATA: 2 HP, 200/400V, 5.6/2.8 AMPS @ 1.00 SF

GREASE TYPE: SHELL ALVANIA R3 LITHIUM GREASE

**Additional Information:**

CONDUIT BOX MATERIAL: CAST IRON

SUITABLE FOR USE IN CLASS I DIVISION 2 LOCATIONS

CLASS I DIVISION 2 GROUPS A,B,C,D T3C

CLASS I ZONE 2 IIC T3C



**Performance Characteristics**

1st Winding 1st Connection

**Design: 14AD0013A**

**Marks:**

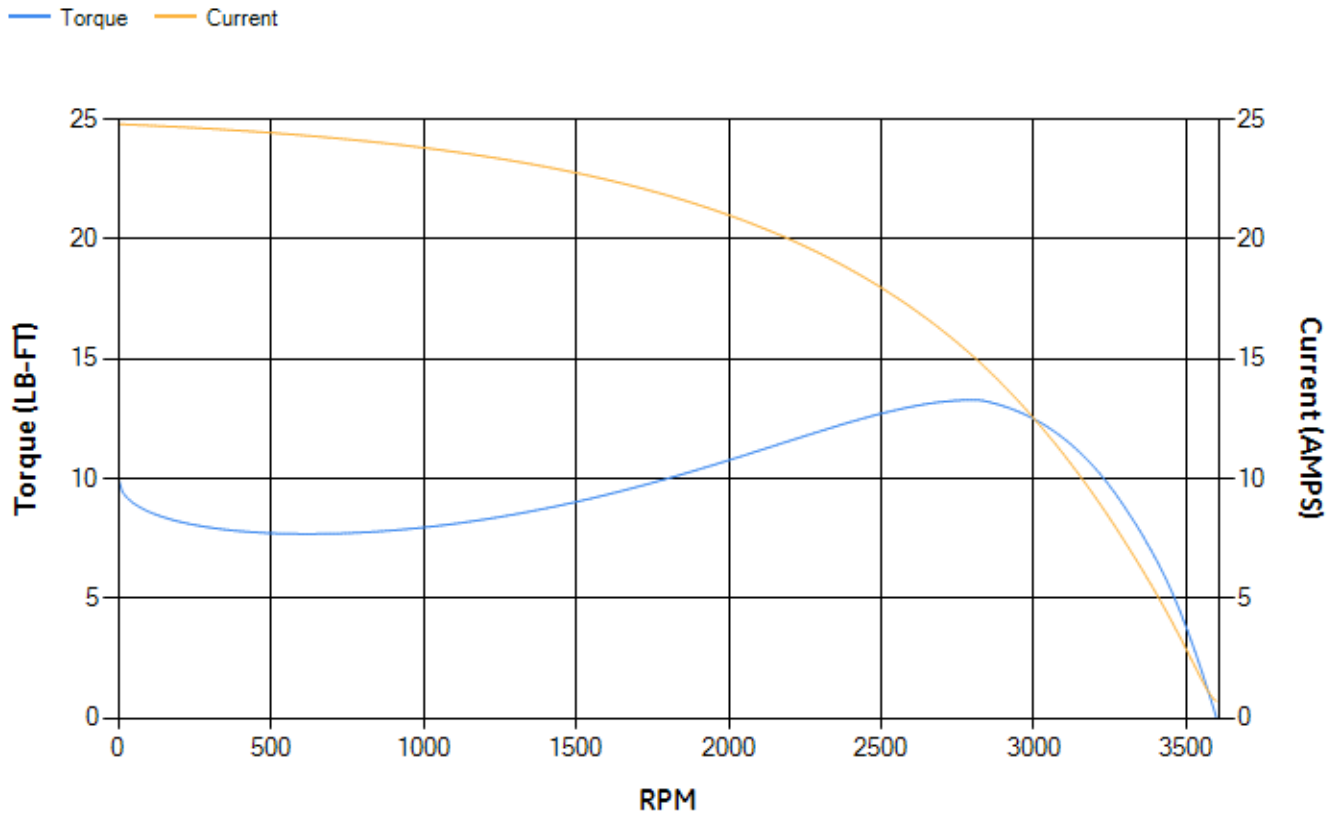
LOAD %	125.0	115.0	100.0	75.0	50.0	25.0	0.0
% EFF	87.7	88.26	89.15	89.6	88.99	84.17	0.00
% PF	91.79	91.39	90.44	87.33	79.96	60.32	10.8
AMPS	2.91	2.67	2.32	1.79	1.32	0.92	0.71

TORQ(FL)#FT	2.99	TORQ(LR)%FL	333.5	TORQ(BD)%FL	426.79
AMPS(LR)	24.8	PF AT START	0.54		

This motor is capable of two cold or one hot start with a maximum connected load inertia of 17 Lb-Ft Sq (0.72 Kg-meter Sq) at 100% voltage, where the load torque varies with the square of the speed. Acceleration time with maximum inertia and the above load type is 23 seconds. Safe stall time at 100% voltage is 39 seconds cold, 33 seconds hot. Rotor inertia is 0.07 Lb-Ft Sq (0 Kg-meter Sq).

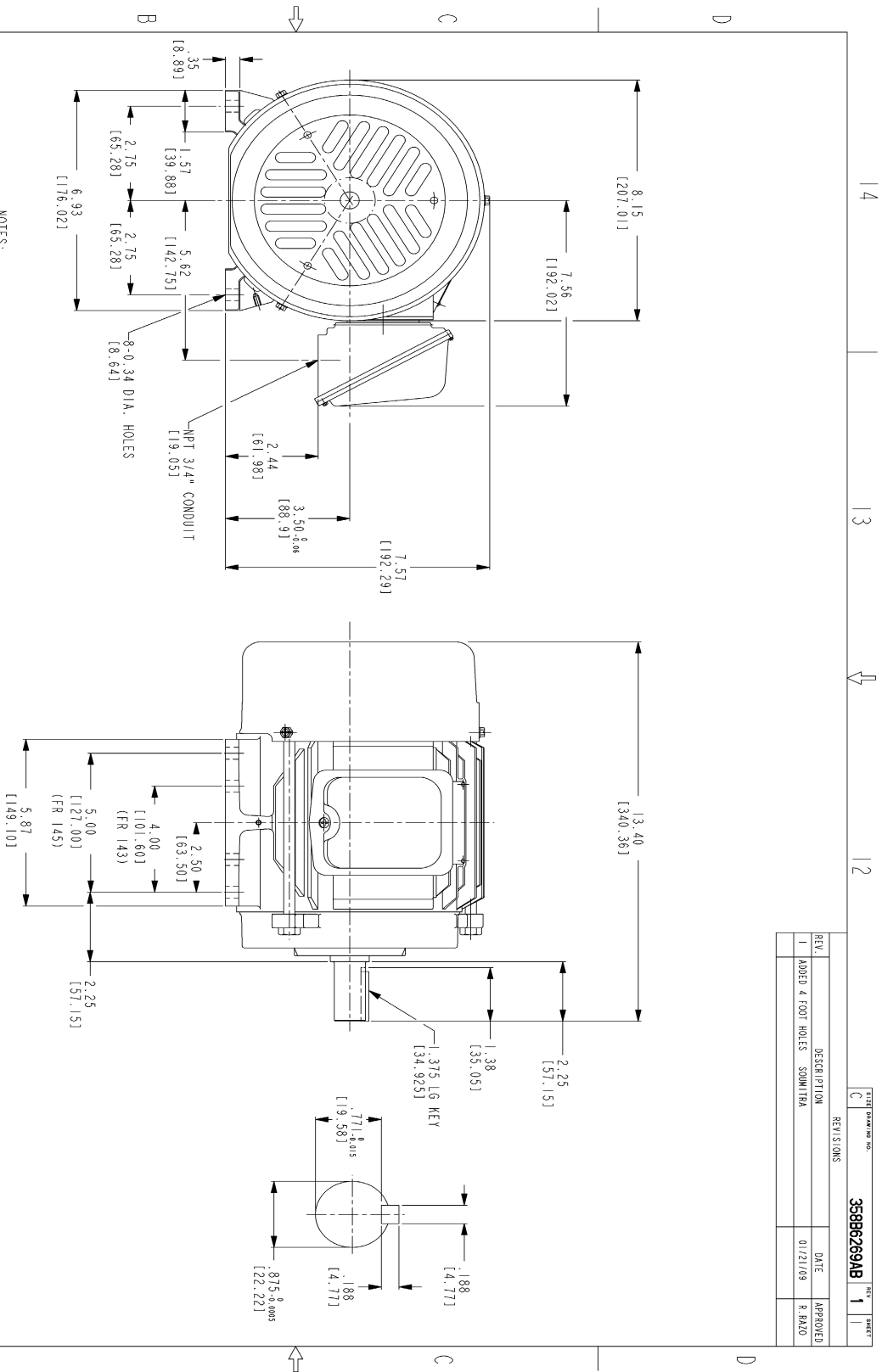
Open Circuit A-C:	0.335	Short Circuit D-C:	0.006
Short Circuit A-C:	0.007	X/R Ratio:	2.203
Stator Slots:	24	Rotor Slots:	28

**Speed Torque Current Curve (First Connection, First Speed)**



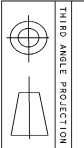
NAME:501452442 OBJECT:358B6269AB DATE:22-Jan-09 11:08:53

Marks:



- NOTES:
1. DIMENSIONS ARE IN INCHES.
  2. F-1 ASM AS SHOWN.
  3. F-2 ASM - HAS CONDUIT BOX ON OPPOSITE SIDE.
  4. BRACKETED DIMENSIONS ARE METRIC (MILLIMETERS)
  5. IC411, 1P94, 1MB34 APPLY.

REV.	DESCRIPTION	DATE	APPROVED
1	ADDED 4 FOOT HOLES	01/21/09	R. PALO



THIRD ANGLE PROJECTION

Part must conform to SI 900000 Sect 4, Toxicity Procedure

FOR ADDITIONAL INFO REFER TO:	SIGNATURES	DATE
REVISIONS		
DRAWING SPECIFIED		
DIMENSIONS ARE IN INCHES		
TOLERANCE ON DIMENSIONS		
1. F.L. DECIMALS ± 0.1		
2. F.L. DECIMALS ± 0.02		
3. F.L. DECIMALS ± 0.05		
ANGLES ± 0.5		
FRACTIONS ±		
FINISH		

GENERAL ELECTRIC COMPANY	DATE
GE Consumer & Industrial	12/26/07
SKETCHED	12/26/07
DESIGNED	12/26/07
ENGINEER	12/26/07
QUALITY	
ISSUED	12/26/07
SCALE: DRAWING SCALE	
SCALE: MODEL NAME	
SCALE: DRAWING SCALE	
SCALE: MODEL NAME	
SCALE: DRAWING SCALE	
SCALE: MODEL NAME	

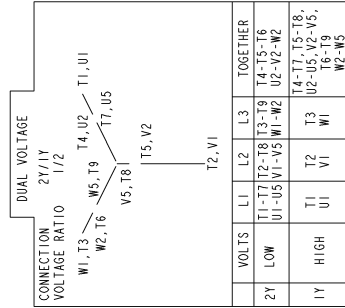
**OUTLINE**  
 FTD - H37/H37 TERC CE MARK  
 471 CU IN CONDUIT BOX

358B6269AB REV 1

4 3 2 1

Marks:

**Connection Diagram**  
**GEM2034E-FIG203**



NAME: 500903578 OBJECT: GEM2034E-FIG203 DATE: 03-Nov-06 13:53:10