

Product Information Packet

November 9, 2016

Data shown is for the current revision model #. Ensure your nameplate model # matches.

Model Number:	5KS143STE222A
Catalog Number:	M7738
Instruction Manual:	GEI-M1031
Connection Diagram:	GEM2034E-FIG203
Outline Drawing:	358B6275AB

Accessory Connection Diagrams			
Bearing Thermocouple:	None	Heater:	None
RTD:	None	Thermistor:	None
Thermostat:	None	Winding Thermocouple:	None
Bearing RTD:	None		

Table of Contents	
Specification	01
Performance Characteristics	02
Outline Drawing	03
Connection Drawing(s)	04



Marks:

MODEL NUMBER:	5KS143STE222A	Estimated Weight:	56 Lbs
Outline Drawing:	358B6275AB	Time Rating:	CONT
Connection Diagram:	GEM2034E-FIG203	Enclosure:	TEFC
Instruction Book:	GEI-M1031	Encl Construction:	SD
Design Code:	14AD1011A	Ambient Max(°C):	40
Type:	KS	Alt Ambient Max(°C):	--
Frame:	143TC	Insulation Class:	F
Phases:	3	NEMA Design:	B
Poles:	4	Nominal Efficiency:	85.5 %
Output Power:	1HP 0.7KW	Guaranteed Efficiency:	82.5
RPM:	1750	3/4 Load Efficiency:	88.0
Voltage:	230/460	KVA Code:	N
Hertz:	60	Max KVAR:	0.5
Amps - FL:	2.8/1.4	Power Factor:	76
Service Factor:	1.15	Bearing - DE:	6205ZZC3
Alt Service Factor:	--	Bearing - ODE:	6205ZZC3

Enclosure is Totally Enclosed Fan-Cooled

Stamped Nameplate Notes:

USABLE AT 200V @ 1 HP, 3.1 AMPS @ 1.0 SF

LRA: 22.4/11.2

50HZ DATA: .75 HP, 200/400V, 2.8/1.4 AMPS @ 1.15 SF

50HZ DATA: 1 HP, 200/400V, 3.2/1.6 AMPS @ 1.00 SF

GREASE TYPE: SHELL ALVANIA R3 LITHIUM GREASE

Additional Information:

CONDUIT BOX MATERIAL: CAST IRON

SUITABLE FOR USE IN CLASS I DIVISION 2 LOCATIONS

CLASS I DIVISION 2 GROUPS A,B,C,D T3C

CLASS I ZONE 2 IIC T3C

Performance Characteristics

1st Winding 1st Connection

Design: 14AD1011A

Marks:

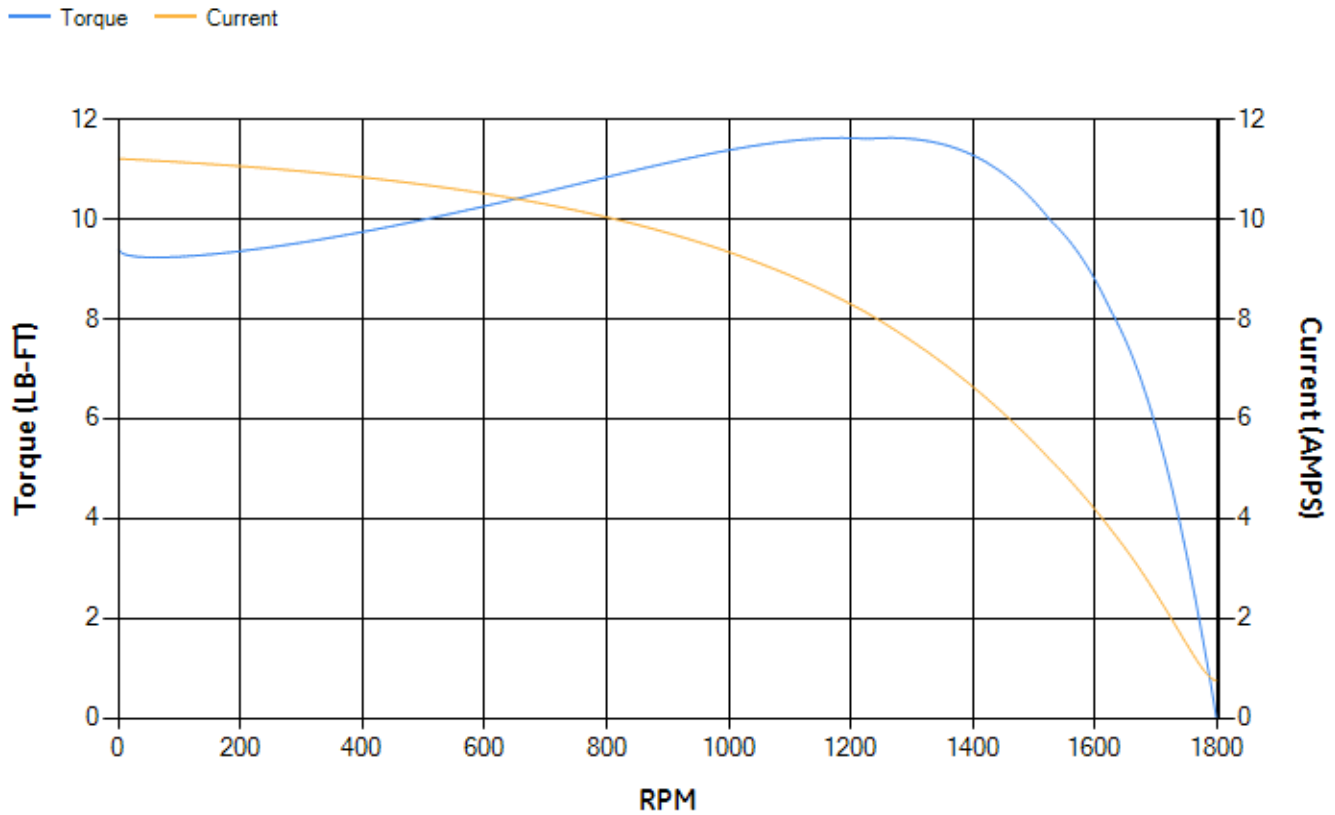
LOAD %	125.0	115.0	100.0	75.0	50.0	25.0	0.0
% EFF	87.6	87.91	88.39	87.99	86.1	78.69	0.00
% PF	80.45	79.04	76.26	69.03	56.64	36.38	7.66
AMPS	1.66	1.55	1.39	1.16	0.96	0.82	0.75

TORQ(FL)#FT	3	TORQ(LR)%FL	313.29	TORQ(BD)%FL	382.02
AMPS(LR)	11.21	PF AT START	0.53		

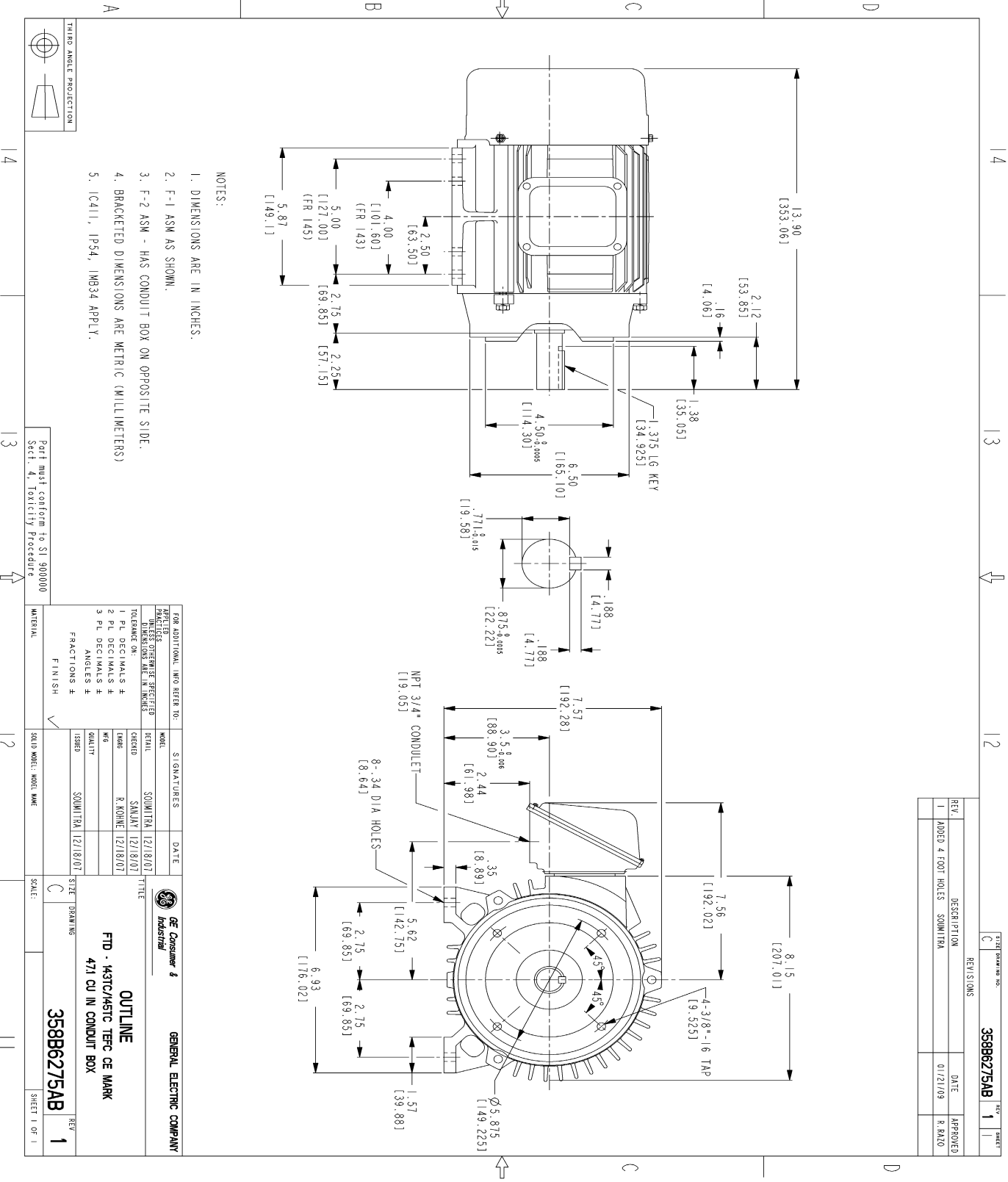
This motor is capable of two cold or one hot start with a maximum connected load inertia of 74 Lb-Ft Sq (3.12 Kg-meter Sq) at 100% voltage, where the load torque varies with the square of the speed. Acceleration time with maximum inertia and the above load type is 47 seconds. Safe stall time at 100% voltage is 112 seconds cold, 94 seconds hot. Rotor inertia is 0.1 Lb-Ft Sq (0 Kg-meter Sq).

Open Circuit A-C:	0.157	Short Circuit D-C:	0.008
Short Circuit A-C:	0.008	X/R Ratio:	2.85
Stator Slots:	36	Rotor Slots:	28

Speed Torque Current Curve (First Connection, First Speed)



Marks:



NOTES:

1. DIMENSIONS ARE IN INCHES.
2. F-1 ASM AS SHOWN.
3. F-2 ASM - HAS CONDUIT BOX ON OPPOSITE SIDE.
4. BRACKETED DIMENSIONS ARE METRIC (MILLIMETERS)
5. ICA11, IP94, IMB34 APPLY.

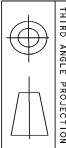
REV.	DESCRIPTION	DATE	APPROVED
1	ADDED 4 FOOT HOLES	01/21/09	R. PALO

FOR ADDITIONAL INFO REFER TO:		SIGNATURES		DATE	
APPLICABLE DIMENSIONS SPECIFIED	DETAIL				
DIMENSIONS ARE IN INCHES	SHEET	SOMITRA	12/18/07		
TOLERANCE ON:	SIZE	SANJAY	12/18/07		
F L DECIMALS ±	FRAC.	R. KOHLE	12/18/07		
2 F L DECIMALS ±	ISSUE				
3 F L DECIMALS ±	QUALITY				
ANGLES ±	FINISH				
	FRACCTIONS ±				
	SOID MODEL NAME				
	SCALE:				

GE Consumer & Industrial GENERAL ELECTRIC COMPANY

OUTLINE
 FTD - K3TC/H3TC TERC CE MARK
 471 CU IN CONDUIT BOX

358B6275AB REV 1

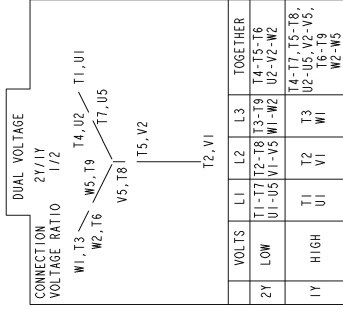


Part must conform to SI 900000 Sect. 4, Toxicity Procedure

SHEET 1 OF 1

Marks:

Connection Diagram
GEM2034E-FIG203



NAME: 500903578 OBJECT: GEM2034E-FIG203 DATE: 03-Nov-06 13:53:10